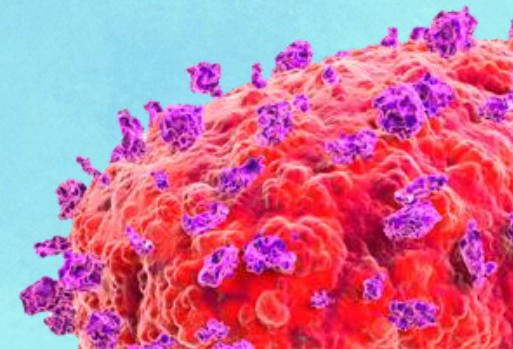


UPDATE MINGGUAN MPOX DI INDONESIA

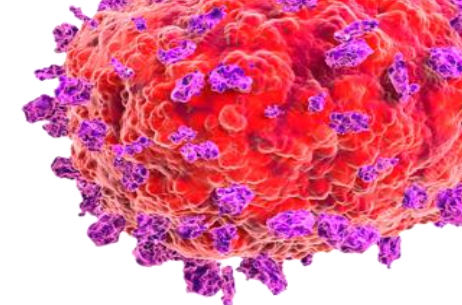
**MINGGU EPIDEMIOLOGI KE-14 DAN KE-15 2025
(30 MARET – 12 APRIL 2025)**





Laporan Mingguan Mpox Minggu Epidemiologi Ke-14 dan Ke-15 2025

(30 Maret – 12 April 2025)



| PROVINSI | KASUS KONFIRMASI | | | KASUS SEMBUH | | | KASUS MENINGGAL | | | |
|----------|------------------|----------------------|-----|-----------------|----------------------|-----|-----------------|----------------------|-----|---|
| | S/D 29 MAR 2025 | 30 MAR – 12 APR 2025 | KUM | S/D 29 MAR 2025 | 30 MAR – 12 APR 2025 | KUM | S/D 29 MAR 2025 | 30 MAR – 12 APR 2025 | KUM | |
| 1 | DKI Jakarta | 59 | 0 | 59 | 59 | 0 | 59 | 0 | 0 | 0 |
| 2 | Jawa Barat | 13 | 0 | 13 | 13 | 0 | 13 | 0 | 0 | 0 |
| 3 | Banten | 9 | 0 | 9 | 9 | 0 | 9 | 0 | 0 | 0 |
| 4 | Kep. Riau | 1 | 0 | 1 | 1 | 0 | 1 | 0 | 0 | 0 |
| 5 | Jawa Timur | 3 | 0 | 3 | 3 | 0 | 3 | 0 | 0 | 0 |
| 6 | DIY | 3 | 0 | 3 | 3 | 0 | 3 | 0 | 0 | 0 |
| | TOTAL | 88 | 0 | 88 | 88 | 0 | 88 | 0 | 0 | 0 |

